

GLASS TUBE FLOW METER

MICRO PURGE FLOW METER

METAL TUBE FLOW METER 1

METAL TUBE FLOW METER 2

ORIFICE FLOW METER

FLOW SWITCH & SIGHT FLOW METER

TURBINE FLOW METER

MICRO PURGE FLOW METER

FLOW SWITCH & SIGHT FLOW METER

FLOW SWITCH & SIGHT FLOW METER

MODEL : CKA Series

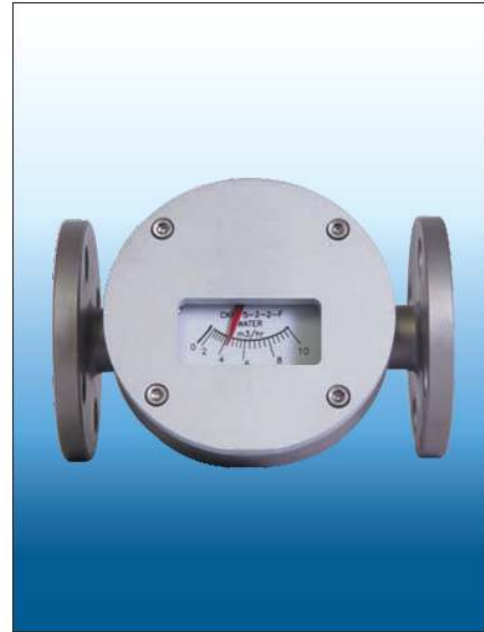
DESCRIPTION

CKA Series : Flow Gauge

They are magnet coupling, pointer indication type sight glass. A flapper is located in flow path and the movement of the flapper is transferred to the pointer by magnetic coupling for the indication on the scale plate. They are used to measure the opaque liquid, sludge cooling water and gases.

FEATURES

- Magnet coupling



FLOW CHART

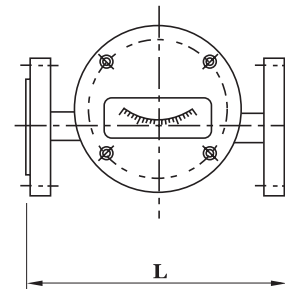
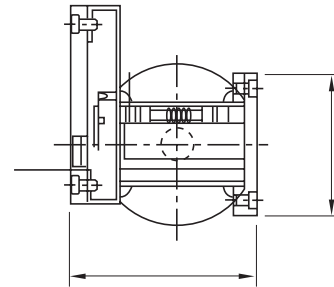
S ZE		FLOW RATE			Length (mm)	
		H2O (m ³ /h)	GAS (Nm ³ /h)	OIL (L/min) Viscosity : Below 320 c.p.	L (Flange)	L (Screw)
15A	1/2B	0.1 - 0.5	6 - 30	0 ~ 5	220	150
		0.4 - 2.0	12 - 60	0 ~ 10		
20A	3/4B	0.1 - 0.5	6 - 30	0 ~ 15	220	160
		0.4 - 2.0	12 - 60	0 ~ 20		
25A	1B	0.2 - 1.0	12 - 60	0 ~ 25	220	180
		1.0 - 5.0	30 - 150	0 ~ 30		
32A	1 1/4B	0.2 - 1.0	12 - 60	0 ~ 40	220	200
		1.0 - 5.0	30 - 150	0 ~ 50		
40A	1 1/2B	0.4 - 2.0	16 - 80	0 ~ 55	220	200
		2.0 - 1.0	60 - 300	0 ~ 65		
50A	2B	0.6 - 3.0	20 - 100	0 ~ 70	220	220
		3.0 - 15.0	90 - 450	0 ~ 80		
65A	2 1/2B	1.2 - 6.0	60 - 300	0 ~ 90	260	220
		6.0 - 30	180 - 900	0 ~ 100		
80A	3B	1.6 - 8.0	120 - 600	0 ~ 120	300	
		8.0 - 40	240 - 1200	0 ~ 150		
100A	4B	3.0 - 15.0	180 - 900	0 ~ 170	330	
		16.0 - 80.0	400 - 2000	0 ~ 200		
125A	5B	4.0 - 20.0	200 - 1000		380	
		20.0 - 100.0	600 - 3000			
150A	6B	6.0 - 30.0	240 - 1200		480	
		30.0 - 150.0	900 - 4500			
200A	8B	12.0 - 60.0	300 - 1500		650	
		60.0 - 300.0	1800 - 9000			
250A	10B	16.0 - 80.0	600 - 3000		680	
		80.0 - 400.0	2400 - 12000			
300A	12B	20.0 - 100.0	900 - 4500		720	
		100.0 - 500.0	3000 - 15000			

SPECIFICATION

* MEASURING	Liquid, Gas (Option: Steam)
* METER SIZE	15A(1/2") ~ 300A(12")
* MATERIAL	SUS 304 / SUS 316 / SUS316L Other Materials on Request
* PRESSURE RATING	10 kgf/cm ² (Standard) Option : 20 kgf/cm ²
* TEMPERATURE	Operation : 0~ 100° C (Max : 120° C) Option : 200° C
* CONNECTION	Flange Connection (JIS / ANSI / DIN / other) Screw Connection Clamp Connection
* ACCURACY	+/- 5% of FS

MATERIAL

PART LIST	MATERIAL		
	SUS304	SUS316	SUS316L
Flange	SUS304	SUS316	SUS316L
Packing	NBR, EPDM, VITON, TEFLON, OTHERS		
Body	SUS304	SUS316	SUS316L
Shaft	SUS304	SUS316	SUS316L
Spring	SUS304	SUS316	SUS316L
Flapper	SUS304	SUS316	SUS316L
Bolt Nut	SUS304		



DIMENSION

ORDERING CODE

CKA - [] - [] - [] - []

BODY MATERIAL

- A SUS 304
- B SUS 316
- C SUS 316L
- O OTHERS

CONNECTION

- J JIS 10K
- A ANSI 150#
- D DIN PN16
- P SCREW :PT
- N SCREW :NPT
- O OTHERS

METER SIZE

15	15A(1/2")	50	50A(2")	150	150A(6")
20	20A(3/4")	65	65A(2-1/2")	200	200A(8")
25	25A(1")	80	80A(3")	250	250A(10")
32	32A(1-1/4")	100	100A(4")	300	300A (12")
40	40A(1-1/2")	125	125A(5")	O	OTHERS

FLOW DIRECTION

- 1** Bottom -> Top
- 5** Side -> Side
- 6** Top -> Bottom

FLOW SWITCH & SIGHT FLOW METER